

*School District
of Ashland*

ASHLAND MIDDLE SCHOOL



Adding Value to Everything We Do

The following is a list of work performed in the last 30 days:

- Finished brick on all additions
- Finished interior demolition in all areas
- Completed masonry partitions and masonry patches
- Electrical wall and overhead lighting rough-in
- Underground plumbing
- Poured floor patches
- Installed new steel for flex spaces and split joists around IMC raised roof.
- Framed, sheetrocked, and taping partitions and soffits – aprox. 90% complete.
- Painting in tech ed, IMC, flex spaces, computer lab, and 6th grade and 7th grade classrooms.
- Started replacement of wall protection in stairs
- Started installing casework and re-install salvaged casework
- Installed ceiling grid in existing classrooms and ceiling clouds in IMC
- Poured stage in IMC
- Started flooring in IMC
- Started installing lights and electrical devices in classrooms and IMC
- Installed wood windows
- Poured sidewalks – aprox. 75% complete.
- Poured canopy foundations and started structural steel.

The following is a list of work scheduled for the next 30 days:

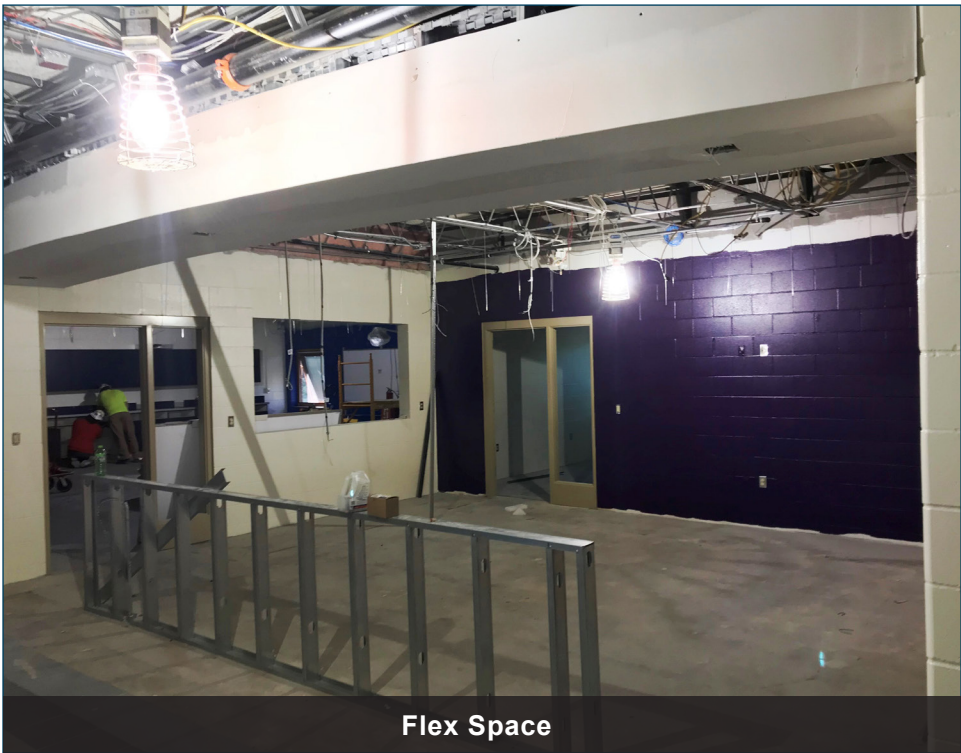
- Finish all HVAC and Electrical rough-in
- Painting in Commons, Art, Speech, and Health areas.
- Finish wall protection replacement in stairs
- Ceiling grid and ceiling tile in all areas.
- Flooring in all areas.
- Ceramic tile in Commons and hallway patches.
- Lighting and electrical devices in all areas.
- HVAC finishes and temperature controls.
- Finish sidewalks
- Masonry and roofing for canopy.
- Grading sitework and seeding
- Asphalt
- Install remaining casework
- Install marker boards
- Doors and hardware
- Install aluminum storefronts and glass at Commons vestibule, IMC, and Art.
- Final Cleaning
- State occupancy inspection

Schedule:

Substantial Completion August 17, 2018
Final Completion..... September 5, 2018



Commons Addition



Flex Space



IMC Addition



Computer Lab